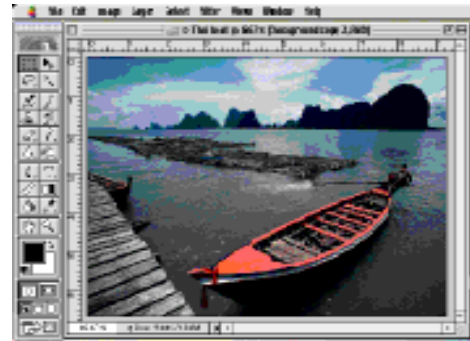


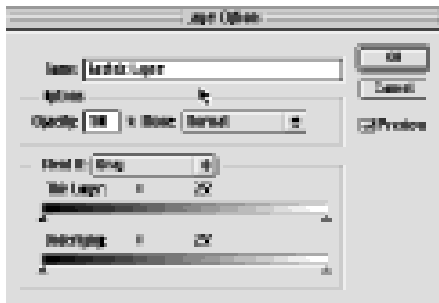
Photoshop According to Me: Blending Filter Effects

by Ray Campbell

Perhaps the greatest strength of Photoshop as a software program is its ability to accept “plug-ins”, small software programs that automatically add themselves as features in Photoshop when added to the “plug-ins” folder. Plug-Ins add various kinds of functions allowing import/export, file format converters, artistic filters and effects, Photoshop come with dozens of Plug-Ins and if they are not enough, there are hundreds more that can be purchased and added.



This lesson employs 2 Plug-In filter effects to turn a photograph into an artistic pen and watercolor rendering. In the process you will practice creating layers, adjusting opacity and using filters.



1. Begin by opening the Thai boat file. If Photoshop palettes are not lined up neatly at the right side of the screen, go file>preferences>general and click on “reset palette locations to default” .

2. Duplicate the background layer twice by dragging the layer to the copy button and the bottom of the layers palette.

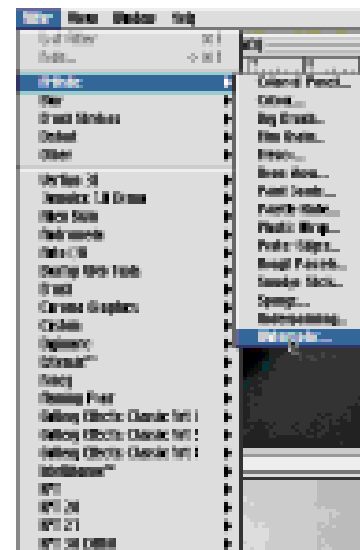
3. Drag the original background layer to the trash. Reason: Background layers are just that, background. The opacity of a background layer is not adjustable and many filters have limited application on a background layer. Since a Photoshop document does not need a background layer, I usually throw it away. As an alternative you can convert it—another lesson, here we will just toss it.

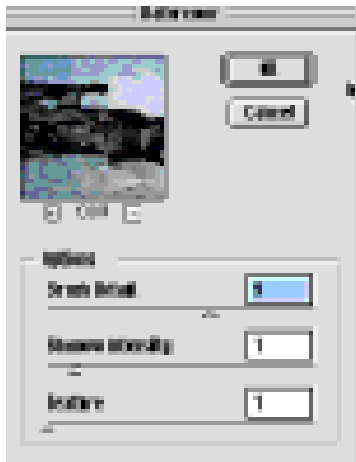
4. Double click on the background copy layer and rename it pencil layer. Then rename the background copy 2 layer watercolor.

5. Select the watercolor layer and then go Filter>Artistic>Watercolor. Note that there are various adjustments you can make. The image in the small preview menu can also be moved by placing the pointer over in, clicking and dragging. When you have experimented and are satisfied click OK.

6. Turn the watercolor layer off by clicking the eye to the left of the layer and activate the pencil layer by clicking directly on it.

7. Go Filters>Sketch>Graphics Pen to apply the Graphics Pen filter to the pencil layer.





8. Turn the watercolor layer back on and adjust the opacity to taste. The blend of the 2 layers will create the look of a watercolored sketch.

Note that some of the most exciting imaging adventures in Photoshop are achieved by applying multiple filters this way. Never stop experimenting with filters and combinations of filters. You never know when you'll find a magic combination.

Vocabulary: opacity, filter, plug-in, layer, background layer.

Concepts: filter effects, multilayered document, plug-in.

The Layer Palette

Layer Mode —

Layer On/Off —

Layer Lock —

Opacity Setting —

Layer must be selected in order to be effected.

To rename a layer, double click on it and a dialog box will appear. Type in the desired name.

Quick Mask **Copy Layer** **Layer Trash**

When the preserve transparency box is checked, areas that are transparent are locked. This can be useful when applying filters to specific areas.

